



SPECGUARD SCP20 GARAGE FLOOR SYSTEM

“SINGLE COMPONENT POLYASPARTIC”

CONCRETE CM2 MENDER, AND X-CRETE WB EPOXY PRIMER



**THE CHOICE IS ALWAYS QUALITY OR PRICE,
WITH SPECGUARD YOU GET BOTH**



ISO 9001:2015 Certified QMS Manufacturer

SUPERIOR QUALITY AND EASE OF USE MAKE SPECGUARD THE RIGHT CHOICE

THE SPECGUARD DIFFERENCE

SCP20 SINGLE COMPONENT POLYASPARTIC eliminates many of the associated issues with traditional two component Polyaspartic system by removing the pot-life concerns and by providing 45-50 minutes of working time. SCP20 has exceptional physical properties, excellent self leveling capabilities, strong chemical resistant's, along with excellent adhesion.

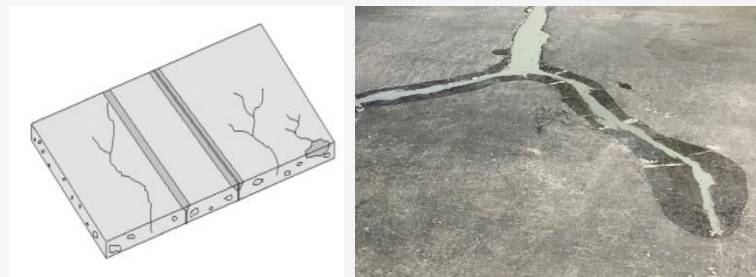
PHYSICAL PROPERTIES

SCP20 physical properties are comparable with two component Polyaspartic products, providing high tensile strength, high surface hardness and high abrasion resistance. SCP20 is designed for ease of use while not giving up any quality or durability. Once you use the product you'll see the benefits. Review the SCP20 data sheet for additional information.

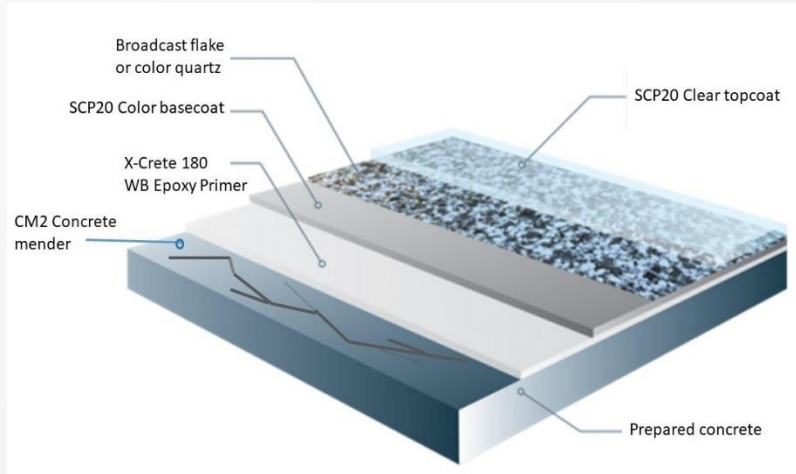
CM2 CONCRETE MENDER is a quick curing, low viscosity and high strength crack repair product. This material has been specially formulated to strongly bond to concrete to fill and repair cracks and spalls in concrete. CM-2 cures in about 15-20 minutes and can be color matched with aggregate to any surface.

APPLICATIONS:

- Filling cracks in concrete on parking decks
- Traffic area spalls & crack repairs
- Floor repair
- Stops additional damage
- Fill & repair spall before coating

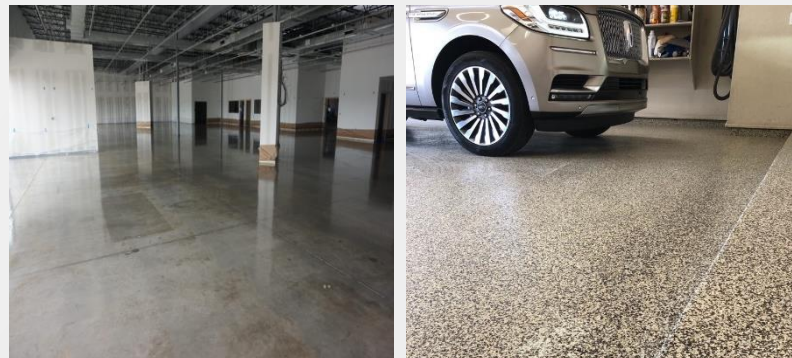


X-CRETE 180 WB EPOXY PRIMER is a fast drying low odor, water-borne clear crosslinked primer for concrete substrates. The product provides excellent adhesion to existing and new concrete and helps eliminate surface irregularities by sealing the surface of the concrete. Sealing the concrete can help minimize micro surface imperfections in the color basecoat and clear topcoat systems.



SURFACE PREPARATION

Surface preparation is the key element for long term success. The concrete surface must allow the coating to soak into the surface of the concrete to create a strong mechanical bond. Acid etching, grinding and light sandblast are acceptable preparation methods. Proper surface preparation will insure a successful outcome. The concrete must be prepared to industry standards in accordance with NACE and SSPC guidelines.



ISO 9001:2015 Certified QMS Manufacturer

SPECGUARD sales@specguard.us.com

www.specguard.us.com 310-722-7516 / 310-834-7037