



**specguard**

## **SCP20 SINGLE COMPONENT POLYASPARTIC**

**DURABILITY, STRENGTH AND ADHESION FOR INDUSTRIAL AND  
RESIDENTIAL APPLICATIONS**



**Residential Garage Floors**



**Industrial Floor Applications**

**THE CHOICE IS ALWAYS QUALITY OR PRICE,  
WITH SPECGUARD YOU GET BOTH**



**ISO 9001:2015 Certified QMS Manufacturer**



## SUPERIOR QUALITY AND EASE OF USE MAKE SCP20 THE RIGHT CHOICE

### THE SPECGUARD DIFFERENCE

SCP20 Single Component Polyaspartic eliminates many of the associated issues with traditional two component Polyaspartic system by removing the pot-life concerns and by providing 45-50 minutes of working time. SCP20 has exceptional physical properties, excellent self leveling capabilities, strong chemical resistant's, along with excellent adhesion.

### PHYSICAL PROPERTIES

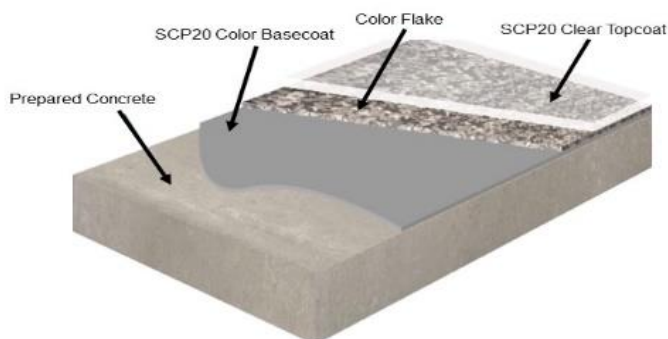
SCP20 physical properties are comparable with two component Polyaspartic products, providing high tensile strength, high surface hardness and high abrasion resistance. SCP20 is designed for ease of use while not giving up any quality or durability. Once you use the product you'll see the benefits. Review the SCP20 data sheet for additional information.

### THE SCP20, BASECOAT AND TOPCOAT

SCP20 can be tinted to be used as a basecoat, this insures system compatibility and ease of use. The pigment is pre-measured in quart containers so no measuring is required. 1-container of SCP20 pigment is added to 1-gallon of clear SCP20 to create the color basecoat.

### APPLICATION PROCESS

The application process of the SCP20 is similar to other products without the mixing, pot-life and short working time issues. Surface preparation is a key component to a successful application. The concrete must be prepared to industry standards in accordance with NACE and SSPC guidelines.



### SURFACE PREPARATION

Surface preparation is the key element for long term success. The concrete surface must allow the coating to soak into the surface of the concrete to create a strong mechanical bond. Acid etching, grinding and light sandblast are acceptable preparation methods. Proper surface preparation will insure a successful outcome. The concrete must be prepared to industry standards in accordance with NACE and SSPC guidelines.

### RETURN TO SERVICE:

The SCP20 tack free time is 2-3 hours. Light foot traffic is acceptable within 8-12 hours. Wheel traffic and vehicle parking acceptable with in 48-72 hours. Any residual odor dissipates within 24-48 hours depending on air flow in the garage.



### SG-SCP20

Clear UV stable topcoat

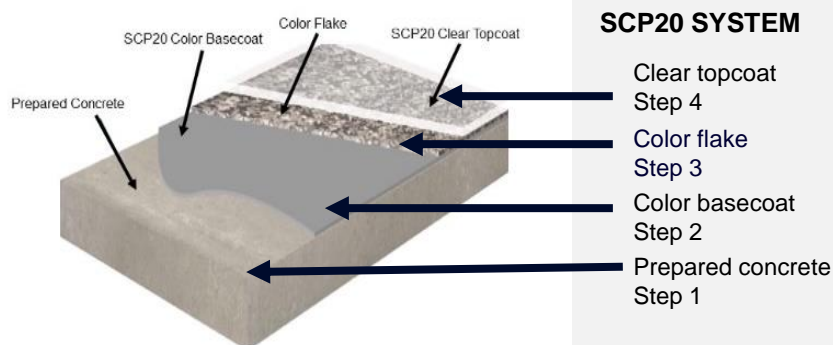
Color flake

### SG-SCP20

Color UV stable basecoat

Prepared concrete





#### SURFACE PREPARATION FOR CONCRETE

Reference SSPC-SP13 / NACE #6, ASTM D 4259, ASTM D 4260. Surfaces must be clean, sound, dry, and free of oils, grease and other bond inhibiting contamination.

Standard colors packs available  
Shelf life 1-year from the date of manufacturing

#### SG-SCP20 STANDARD COLORS



#### TECHNICAL DATA PHYSICAL PROPERTIES SCP20 POLYUREA COATING

Non-compliant SCAQMD areas	250 gm/liter (voc)
Pot life @ 75°F (24°C) 50% RH	Single component
Working time	45-50 minutes
Curing (each coat)	2-6 hours
Light foot traffic	8-12 hours
Wheel traffic	2-3 days
Tack free @ 72°F	2-3 hours
Total Solid Content (Volume)	70%
Elongation ASTM D-412	25%
Tensile (psi)	4800 (clear)
Color stability excellent	100% aliphatic
Tear ASTM D-624	550 lbs./in
Hardness ASTM D-2240	70-75 D
Shelf life	12- months
Viscosity range (SC)	800 -1000 cps

#### ABRASION RESISTANCE ASTM 4060-90

Taber Abrader CS-17 Wheel 12.0 mg loss 1000gm / 1000 cycles.

**COVERAGE RATES (Dry)** (Per Gallon) Subject to substrate condition ( estimate ) 180 – 200 sqft.

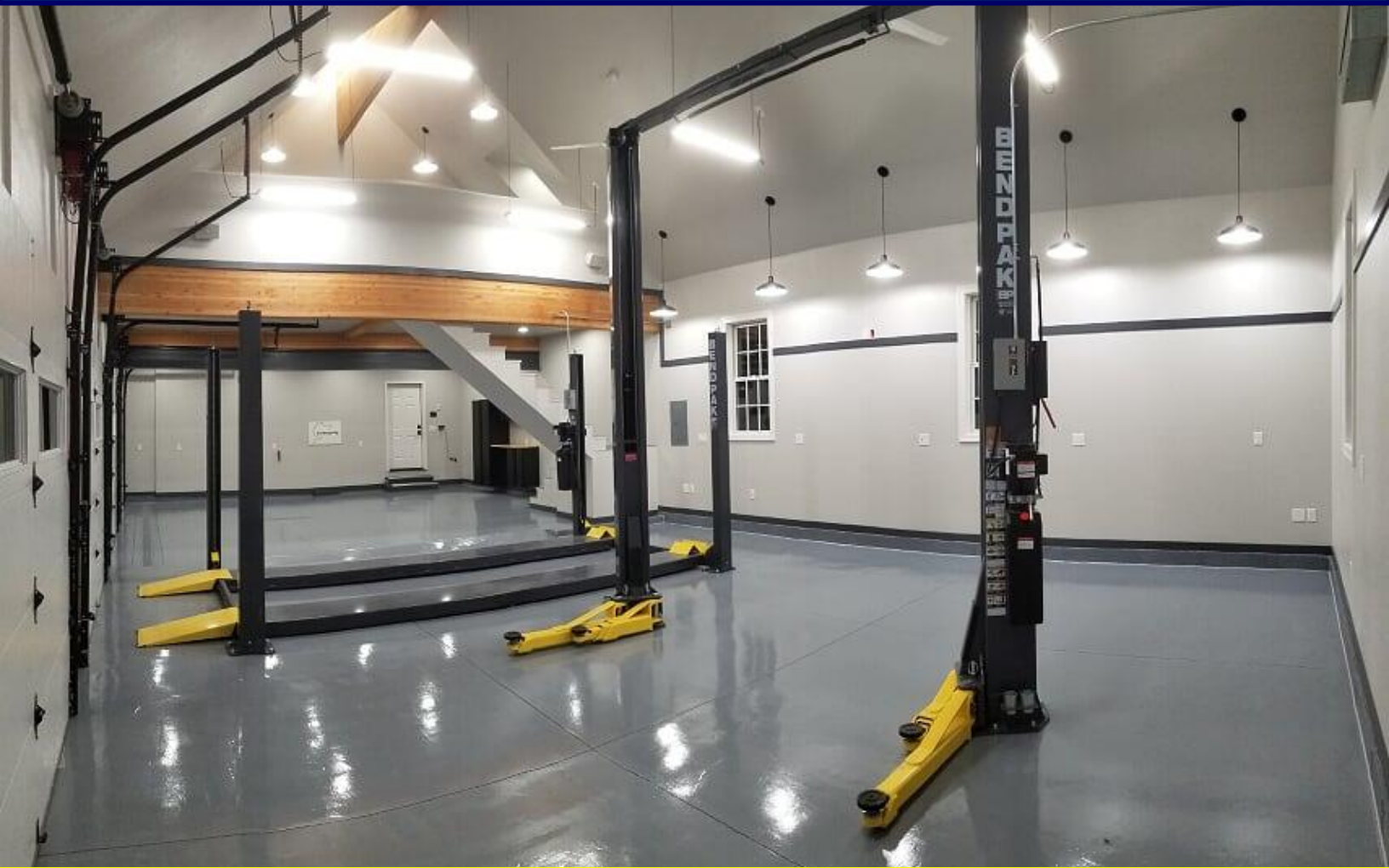
#### Chemical Resistance ASTM D543 (24 hour full Immersion)

Sulfuric Acid 5%	G	Rating:
Sulfuric Acid 10%	F	E= No Effect
Citric acid 1%	E	G= Limited Effect
Isopropyl Alcohol 99%	F	F= Moderate Effect
Aviation Fuel	G	P= Unsatisfactory
Diesel Fuel	G	S=Staining
Gasoline	E	
Ammonia	E	
Sodium Hydroxide	E	
Sodium Hypo Chlorite 5%	E	
Lactic Acid	F	
Hot Tire	E	
Brake Fluid	G	
Sulfuric Acid (Battery, Acid)	F	
Dye for industrial cleaners	S	

#### PRECAUTIONS

Moisture vapor emission in the concrete (MVE) to be less than 3-pounds per 1000 sq. ft. for 24-hour period. Calcium Chloride test ASTM F1869-98 recommended. Should not be applied in direct sunlight or on elevated surface temperatures. SCP20 clear coating is not permeable and may turn opaque or cloudy in exterior application due to ground moisture penetration. UV stable product recommended for indoor applications and outdoor use when ground water is not present.

# SCP20 SINGLE COMPONENT POLYASPARTIC, 100% UV STABLE



## ADDITIONAL SCP20 INSTALLATION OPPORTUNITIES



- Body Shop Floors
- Office Hallways
- Parking Structures
- Office Floors
- Firehouse Floors
- Bath Rooms
- Warehouse Floors
- Residential Garage Floors
- Stock Room Floors
- Manufacturing Floors
- Loading Docks
- Epoxy System Topcoat
- Locker Room Floors
- Retail Floors



ISO 9001:2015 Certified QMS Manufacturer



### SPECGUARD / NATIONAL SALES

Website: [www.specguard.us.com](http://www.specguard.us.com)

Contact: [sales@specguard.us.com](mailto:sales@specguard.us.com)

Office: 310-834-7037 / Direct: 310-722-7516