

SCP20 SINGLE COMPONENT POLYASPARTIC
DURABILITY, STRENGTH AND ADHESION FOR INDUSTRIAL AND
RESIDENTIAL APPLICATIONS



Residential Garage Floors



Industrial Floor Applications

THE CHOICE IS ALWAYS QUALITY OR PRICE,
WITH SPECGUARD YOU GET BOTH





SUPERIOR QUALITY AND EASE OF USE MAKE SCP20 THE RIGHT CHOICE

THE SPECGUARD DIFFERENCE

SCP20 Single Component Polyaspartic eliminates many of the associated issues with traditional two component Polyaspartic system by removing the pot-life concerns and by providing 30-45 minutes of working time. SCP20 has exceptional physical properties, excellent self leveling capabilities, strong chemical resistant's, along with excellent adhesion.

PHYSICAL PROPERTIES

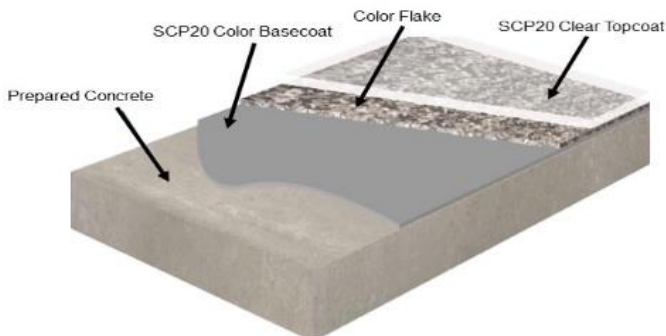
SCP20 physical properties are comparable with two component Polyaspartic products, providing high tensile strength, high surface hardness and high abrasion resistance. SCP20 is designed for ease of use while not giving up any quality or durability. Once you use the product you'll see the benefits. Review the SCP20 data sheet for additional information.

THE SCP20, BASECOAT AND TOPCOAT

SCP20 can be tinted to be used as a basecoat, this insures system compatibility and ease of use. The pigment is pre-measured in quart containers so no measuring is required. 1-container of SCP20 pigment is added to 1-gallon of clear SCP20 to create the color basecoat.

APPLICATION PROCESS

The application process of the SCP20 is similar to other products without the mixing, pot-life and short working time issues. Surface preparation is a key component to a successful application. The concrete must be prepared to industry standards in accordance with NACE and SSPC guidelines.



SURFACE PREPARATION

Surface preparation is the key element for long term success. The concrete surface must allow the coating to soak into the surface of the concrete to create a strong mechanical bond. Acid etching, grinding and light sandblast are acceptable preparation methods. Proper surface preparation will insure a successful outcome. The concrete must be prepared to industry standards in accordance with NACE and SSPC guidelines.

RETURN TO SERVICE:

The SCP20 tack free time is 2-3 hours. Light foot traffic is acceptable within 8-12 hours. Wheel traffic and vehicle parking acceptable with in 48-72 hours. Any residual odor dissipates within 24-48 hours depending on air flow in the garage.



SG-SCP20

Clear UV stable topcoat

Color flake

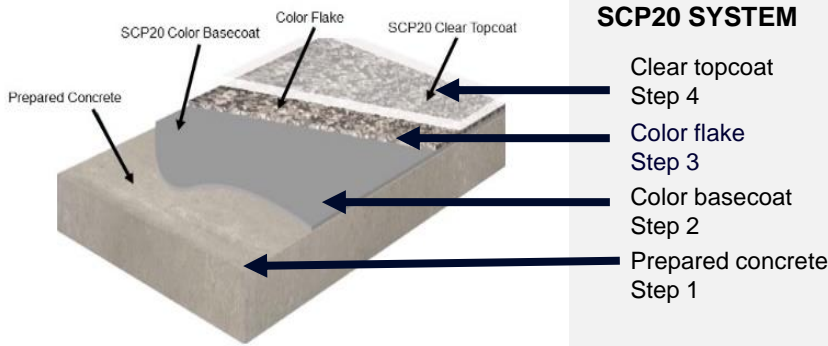
SG-SCP20

Color UV stable basecoat

Prepared concrete



specguard



TECHNICAL DATA

PHYSICAL PROPERTIES

SCP20 POLYUREA COATING

| | |
|-------------------------------|--------------------|
| Non-compliant SCAQMD areas | 250 gm/liter (voc) |
| Pot life @ 75°F (24°C) 50% RH | Single component |
| Curing (each coat) | 2-6 hours |
| Light foot traffic | 8-12 hours |
| Wheel traffic | 2-3 days |
| Tack free @ 72°F | 2-3 hours |
| Total Solid Content (Volume) | 70% |
| Elongation ASTM D-412 | 25% |
| Tensile (psi) | 4800 (clear) |
| Color stability excellent | 100% aliphatic |
| Tear ASTM D-624 | 550 lbs./in |
| Hardness ASTM D-2240 | 70-75 D |
| Shelf life | 12- months |
| Viscosity range (SC) | 800 -1000 cps |

ABRASION RESISTANCE ASTM 4060-90

Taber Abrader CS-17 Wheel 12.0 mg loss 1000gm / 1000 cycles.

COVERAGE RATES (Dry) (Per Gallon) Subject to substrate condition (estimate) 180 – 200 sqft.

Chemical Resistance ASTM D543

(24 hour full Immersion)

| | | |
|-------------------------------|---|--------------------|
| Sulfuric Acid 5% | G | Rating: |
| Sulfuric Acid 10% | F | E= No Effect |
| Citric acid 1% | E | G= Limited Effect |
| Isopropyl Alcohol 99% | F | F= Moderate Effect |
| Aviation Fuel | G | P= Unsatisfactory |
| Diesel Fuel | G | S=Staining |
| Gasoline | E | |
| Ammonia | E | |
| Sodium Hydroxide | E | |
| Sodium Hypo Chlorite 5% | E | |
| Lactic Acid | F | |
| Hot Tire | E | |
| Brake Fluid | G | |
| Sulfuric Acid (Battery, Acid) | F | |
| Dye for industrial cleaners | S | |

PRECAUTIONS

Moisture vapor emission in the concrete (MVE) to be less than 3-pounds per 1000 sq. ft. for 24-hour period. Calcium Chloride test ASTM F1869-98 recommended. Should not be applied in direct sunlight or on elevated surface temperatures. SCP20 clear coating is not permeable and may turn opaque or cloudy in exterior application due to ground moisture penetration. UV stable product recommended for indoor applications and outdoor use when ground water is not present.



SURFACE PREPARATION FOR CONCRETE

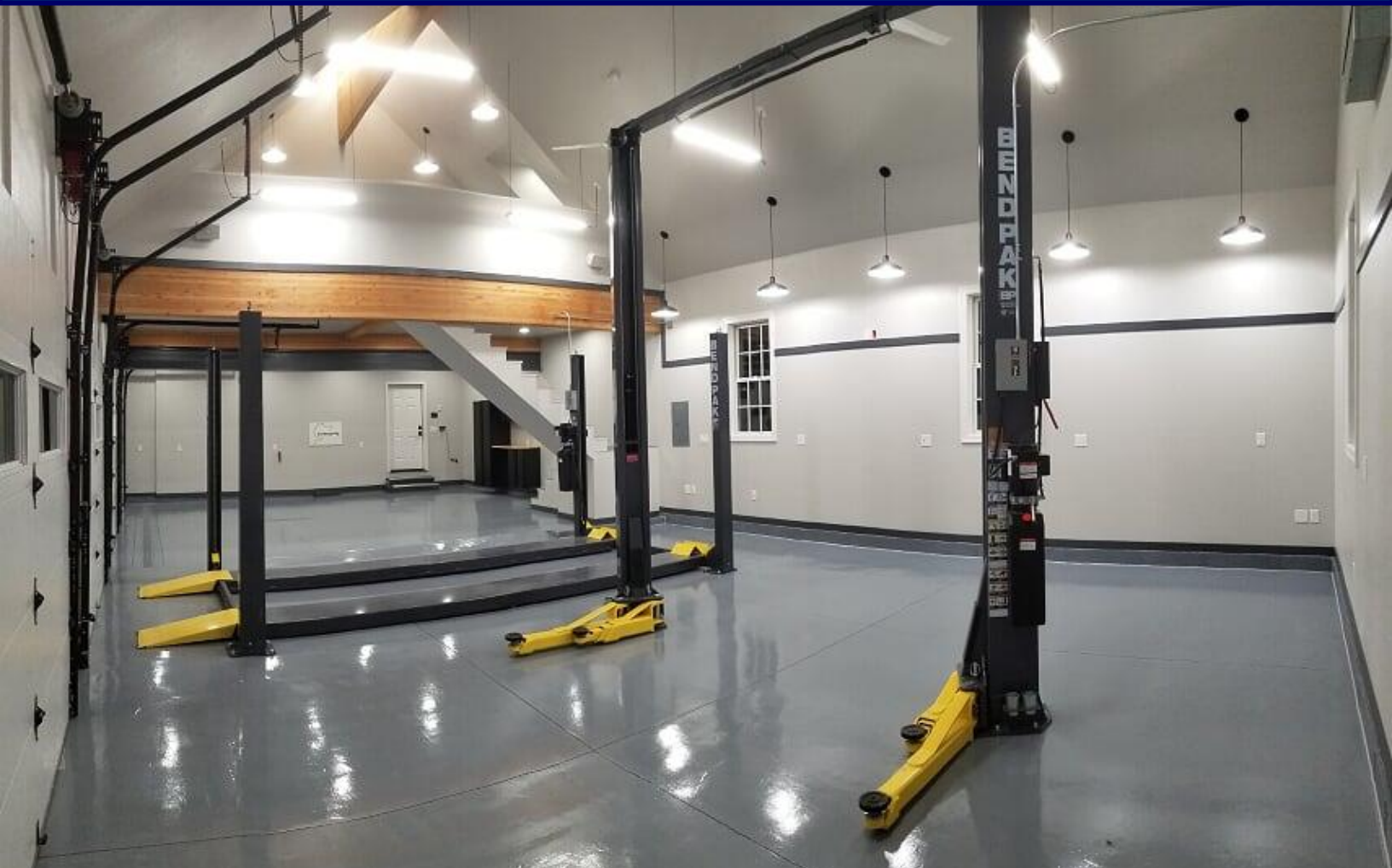
Reference SSPC-SP13 / NACE #6, ASTM D 4259, ASTM D 4260. Surfaces must be clean, sound, dry, and free of oils, grease and other bond inhibiting contamination.

Standard colors packs available
Shelf life 1-year from the date of manufacturing

SG-SCP20 STANDARD COLORS



SCP20 SINGLE COMPONENT POLYASPARTIC, 100% UV STABLE



ADDITIONAL SCP20 INSTALLATION OPPORTUNITIES



- Body Shop Floors
- Office Hallways
- Parking Structures
- Office Floors
- Firehouse Floors
- Bath Rooms
- Warehouse Floors
- Residential Garage Floors
- Stock Room Floors
- Manufacturing Floors
- Loading Docks
- Epoxy System Topcoat
- Locker Room Floors
- Retail Floors



ISO 9001:2015 Certified QMS Manufacturer



SPECGUARD / NATIONAL SALES

Website: www.specguard.us.com

Contact: sales@specguard.us.com

Office: 310-834-7037 / Direct: 310-722-7516